

## Active Directory 2016

Active Directory Domain Services Installation & Configuration –  
Pre-requisite

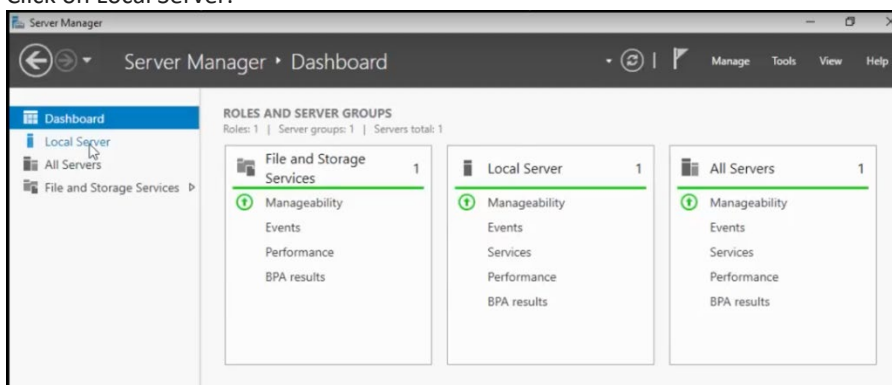
Active Directory stores information about objects on the network and makes this information easy for administrators and users to find and use. Active Directory uses a structured data store as the basis for a logical, hierarchical organization of directory information.

By the end of this lab guide, you will be able to configure a standalone Windows Server 2016 to be able to upgrade to an Active Directory domain controller.

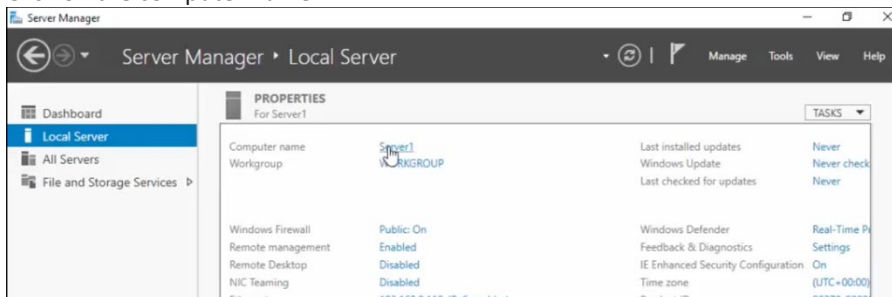
### Step 1:

Configure the server with a suitable hostname and IP address.

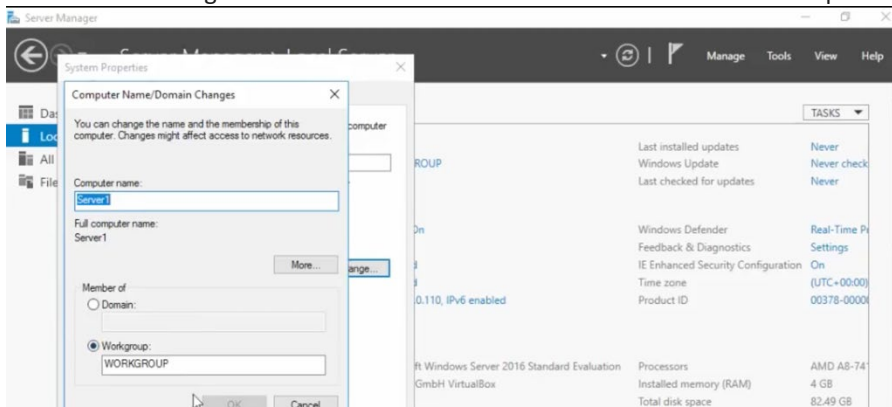
1. Open Windows Server Manager.
2. Click on Local Server.



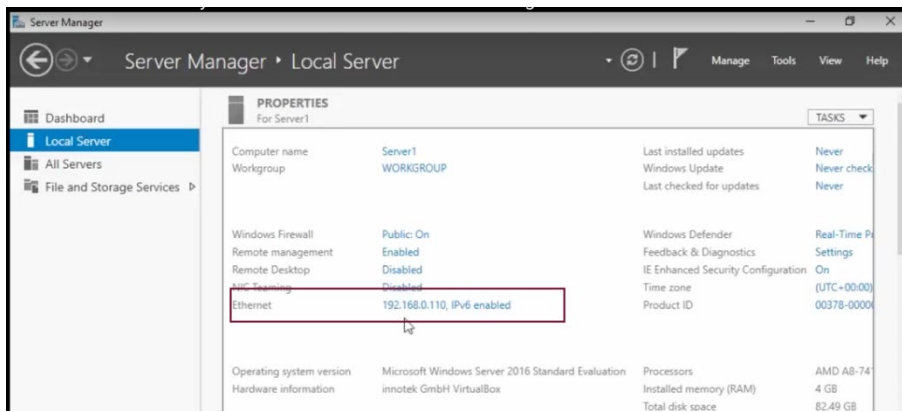
3. Click on the computer name



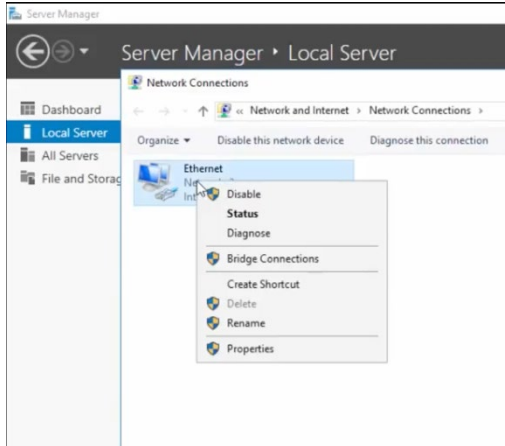
4. Click on the "Change" button and then enter the desirable name in the computer name text field.



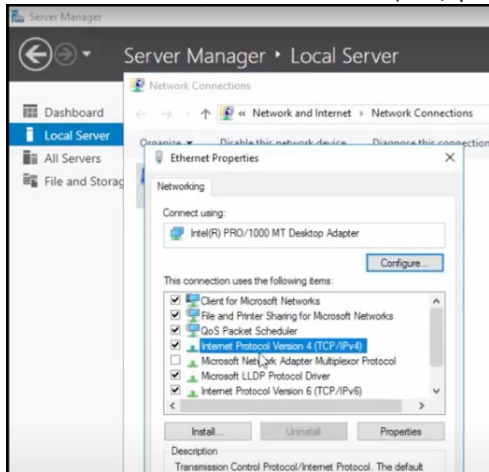
5. Click on the Ethernet section of the Local Server – Properties pane



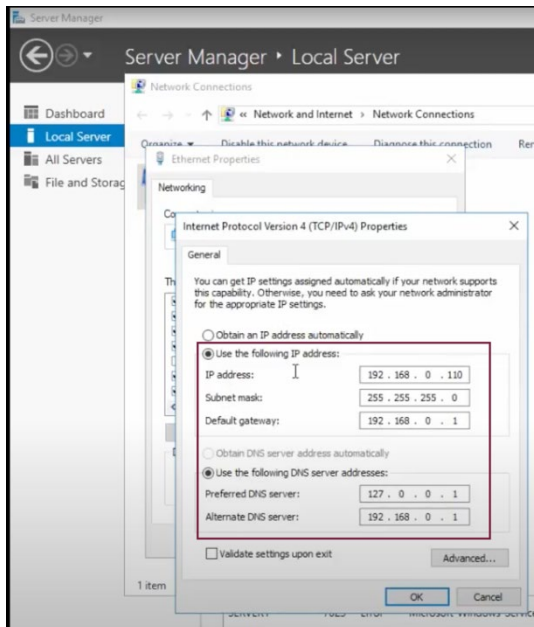
6. Right-click on the 'Ethernet' and click on the 'Properties' option.



7. Choose Internet Protocol Version 4 (TCP/IPv4) and then click on Properties.



8. Configure the following details
  - a. IP Address: Static IP address for the computer.
  - b. Subnet Mask: Configuring a class C subnet mask
  - c. Default Gateway: IP Address of the router
  - d. Preferred DNS Server: For this lab we'll use the loopback address 127.0.0.1



Once the configuration is done, the properties page of the Local Server should have a Computer Name and IP address mentioned in the Ethernet Section.