

## Active Directory 2016

### **Configure group policy settings**

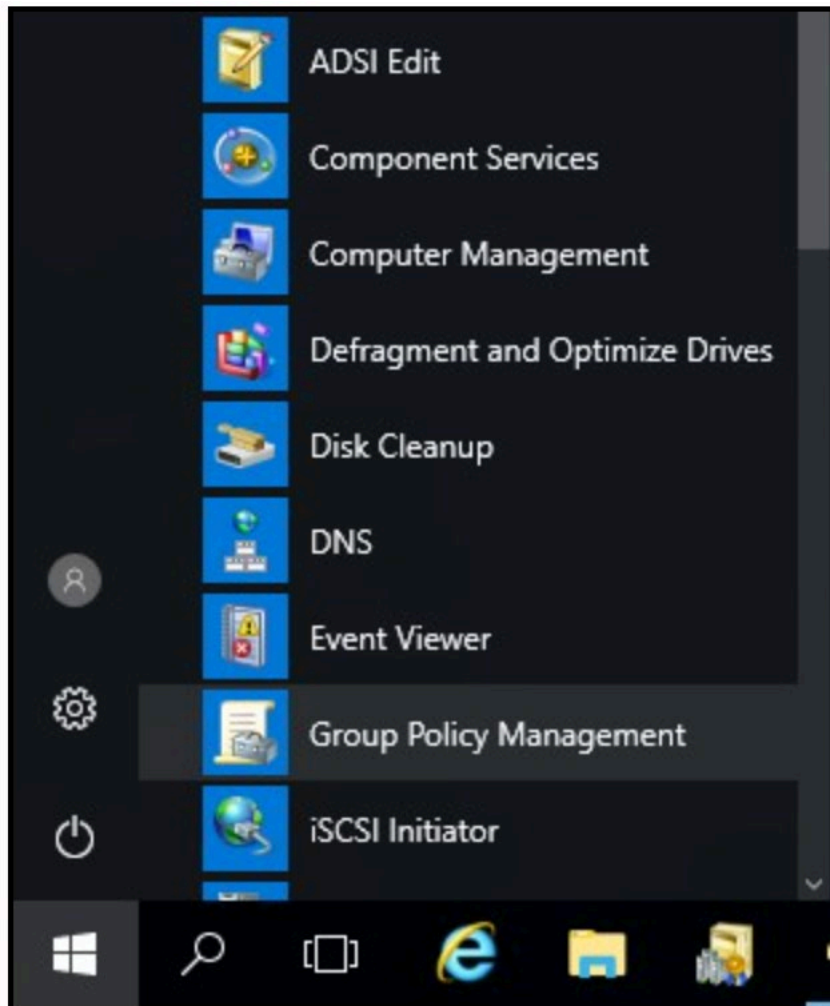
Group Policy is an easy way to configure computer and user settings on computers that are part of the domain. Windows offers a Group Policy management Console (GPMC) to manage and configure Group Policy settings.

Step 1- Log in to the domain controller as administrator

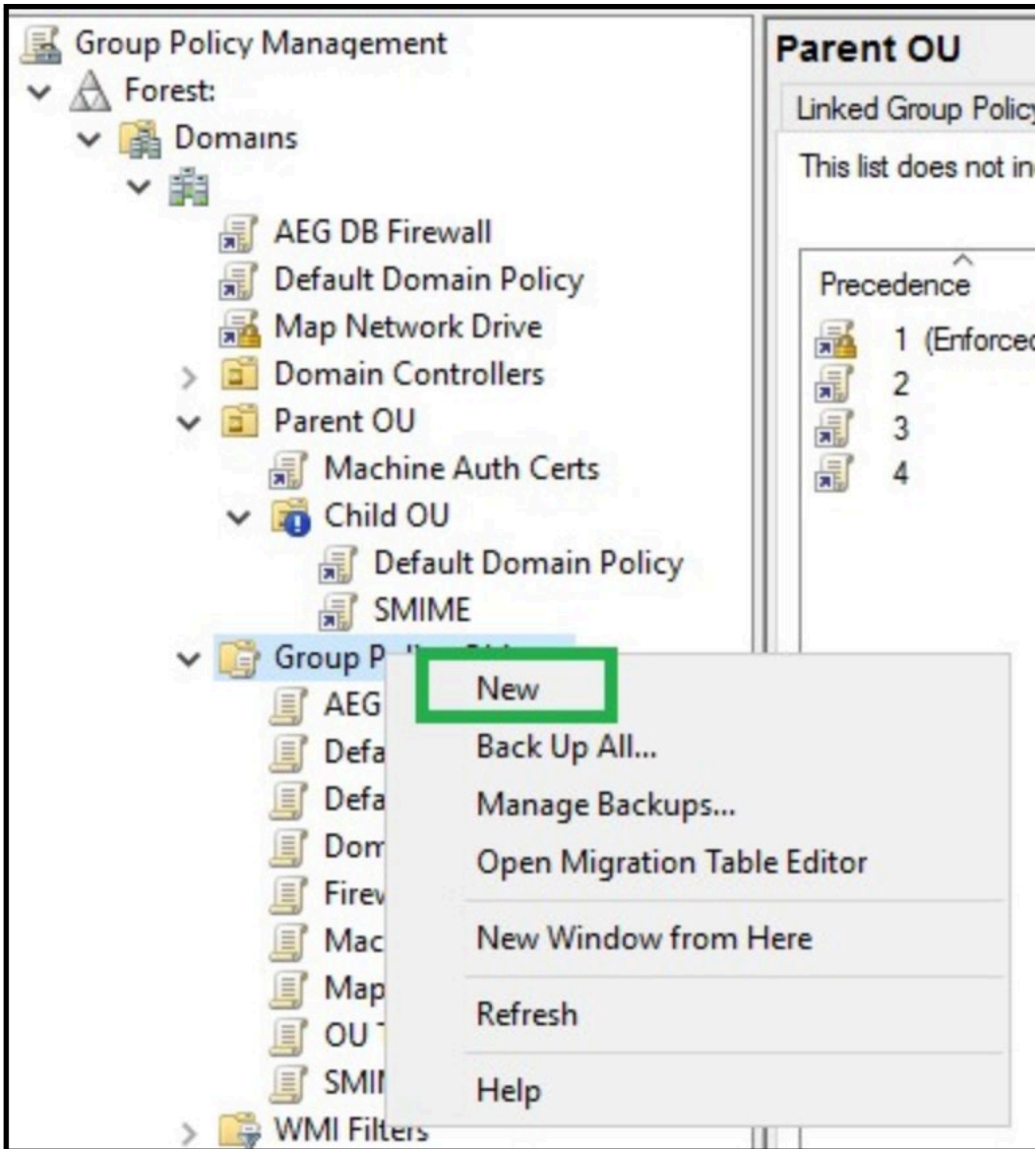
A standard domain user account is not in the local Administrators group and will not have the proper permissions to configure Group Policies.

Step 2 - Launch the Group Policy Management Tool

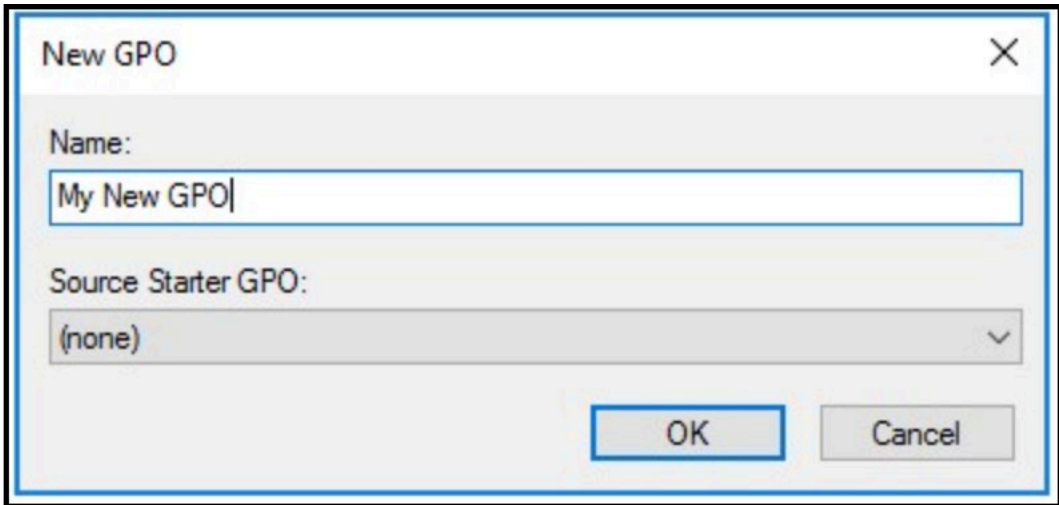
Choose Start → All Programs → Administrative Tools → Group Policy Management



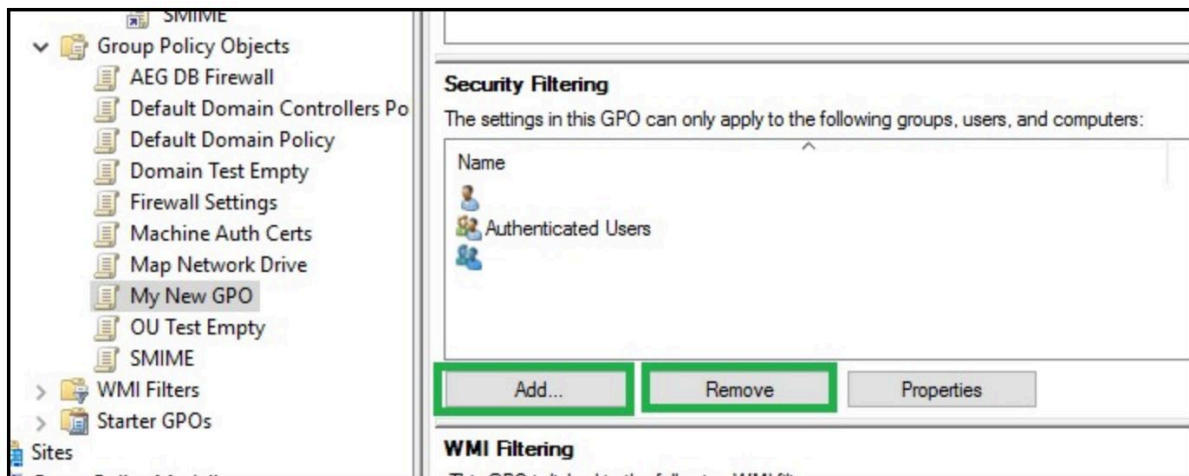
Right-click **Group Policy Objects**, then select **New** to create a new GPO.



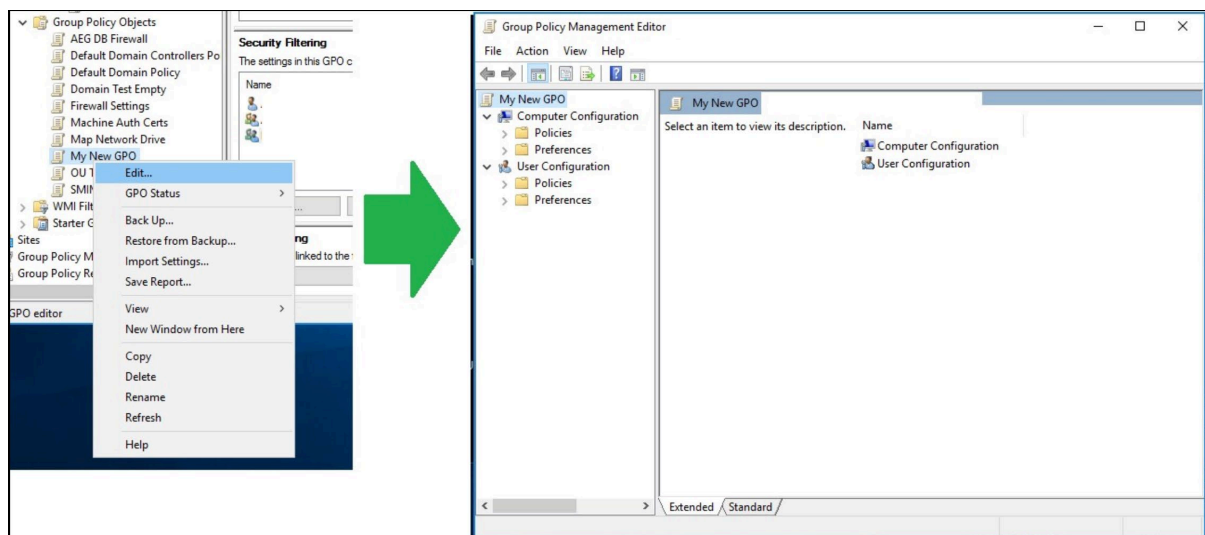
Enter a name for the new GPO that you can identify what it is for easily, then click **OK**.



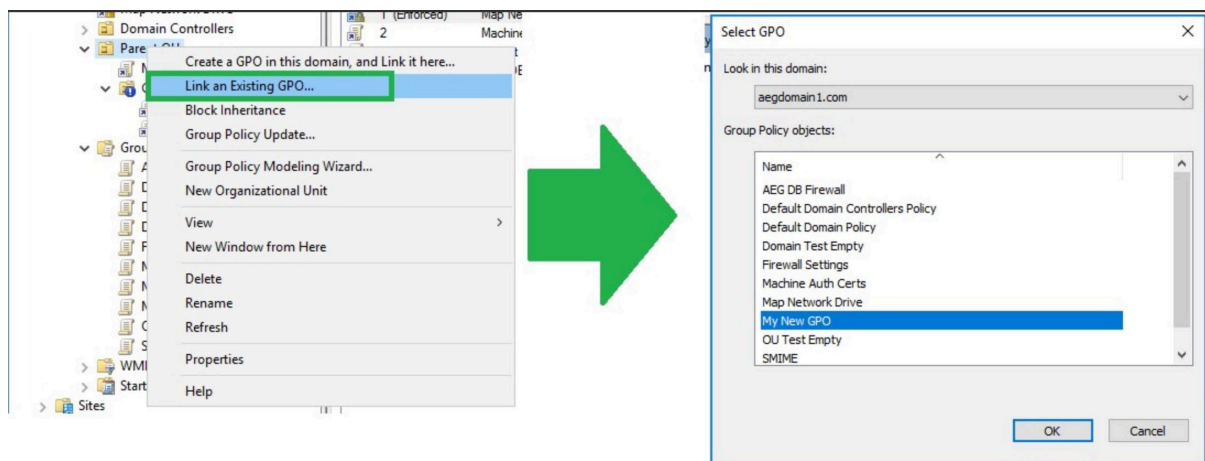
Select the **GPO** from **Group Policy Objects** list, then in the **Security Filtering** section, Add and Remove users, groups, and computers that the GPO should apply to.



Right-Click the GPO, and select **Edit**. Change any of the policies you want to apply in the Computer and\or User Configuration. Close the GPO Editor when you are done.



Now, the GPO is created, but you still need to link it. Locate the OU or Domain you want to apply the GPO to, then right-click it, and select **Link an Existing GPO...**, then select your GPO from the list, and click **OK**.



*Note: Inheritance defines what GPO will override the settings of another. From lowest to highest priority, the levels that GPOs can be applied to are:*

- **Local** - These are policies applied locally to the system and user.
- **Site** - Policies applied to anything that is a member of a site, will override settings that are configured on the Local level.
- **Domain** - Settings in GPOs linked to the domain, will override settings configured in a GPO that is linked at the Local and Site level.
- **Organizational Unit** - GPOs linked here will override any other GPOs, except those linked to a Sub-OU, or a GPO that is marked as Enforced.
- **Enforced** - An Enforced GPO will override the settings of all other GPOs, unless blocked by Block Inheritance.